



Investment Perspectives

Stocks: Broader Market Opportunity in Five Charts

Strong earnings across a wider group of equities and lower inflation may be key to expanding the market's potential.



Matthew DeCicco, CFA,
Partner & Director of Equities



Thomas O'Halloran, CFA, J.D.,
Partner & Portfolio Manager



Melanie Coffin, CFA,
Investment Strategist

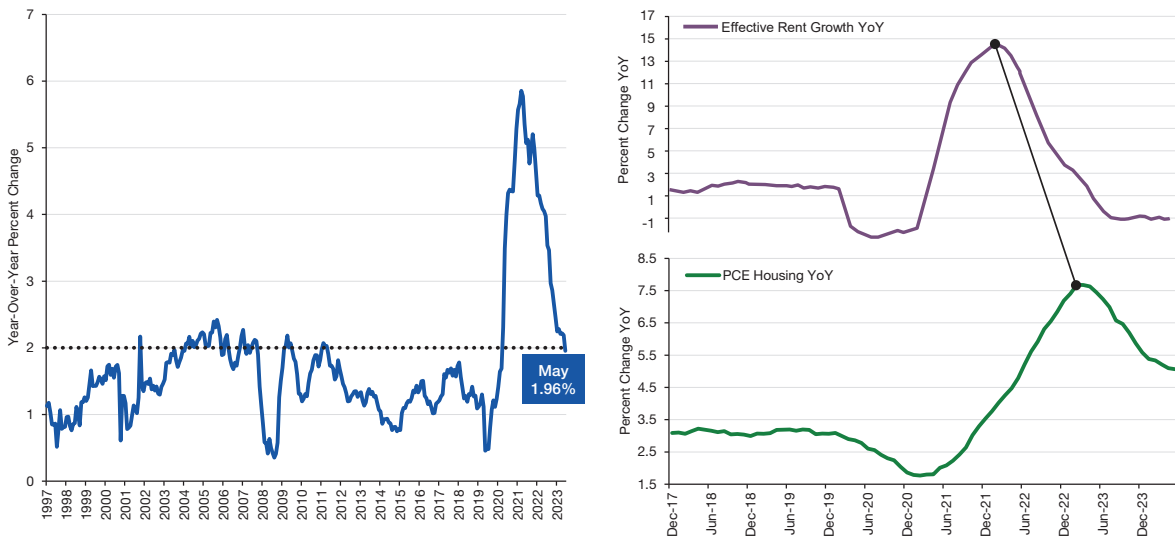
After years of unprecedentedly narrow leadership in the equity markets, many investors are wondering what it will take for the rally to spread to the rest of the market. We believe two drivers are likely: The first is a favorable resolution on the direction of inflation. The second is improved earnings growth for the rest of the market.

Potential Catalysts for Broader Equity Participation

After a few hot inflation reports to start the year, the broad disinflation trend that began a year ago is resuming. Core inflation, ex-housing, is already running at the U.S. Federal Reserve's (Fed) 2% target (Figure 1, left), and there are reasons to believe that shelter, as calculated in official inflation statistics, will slow to match market-based leading indicators, such as the RealPage effective rent growth (Figure 1, right). The July Consumer Price Index (CPI) print confirmed this belief, as inflation data came in lower than expected.

Figure 1.

U.S. Core Personal Consumption Expenditure (PCE), ex-housing, year-over-year (YoY) percent change, December 31, 1997-May 31, 2024 (left), U.S. PCE Housing YoY percent change, December 31, 2017-May 31, 2024 (bottom right), RealPage Effective Rent Growth YoY percent change, December 31, 2017-May 31, 2024 (top right)



Source: Bloomberg, U.S. Bureau of Economic Analysis (BEA), and Evercore ISI Weekly Economic Report, June 9, 2024. Data as of June 30, 2024 (left) and May 31, 2024 (right). The historical data shown in the chart above are for illustrative purposes only and do not represent any specific portfolio managed by Lord Abbett.

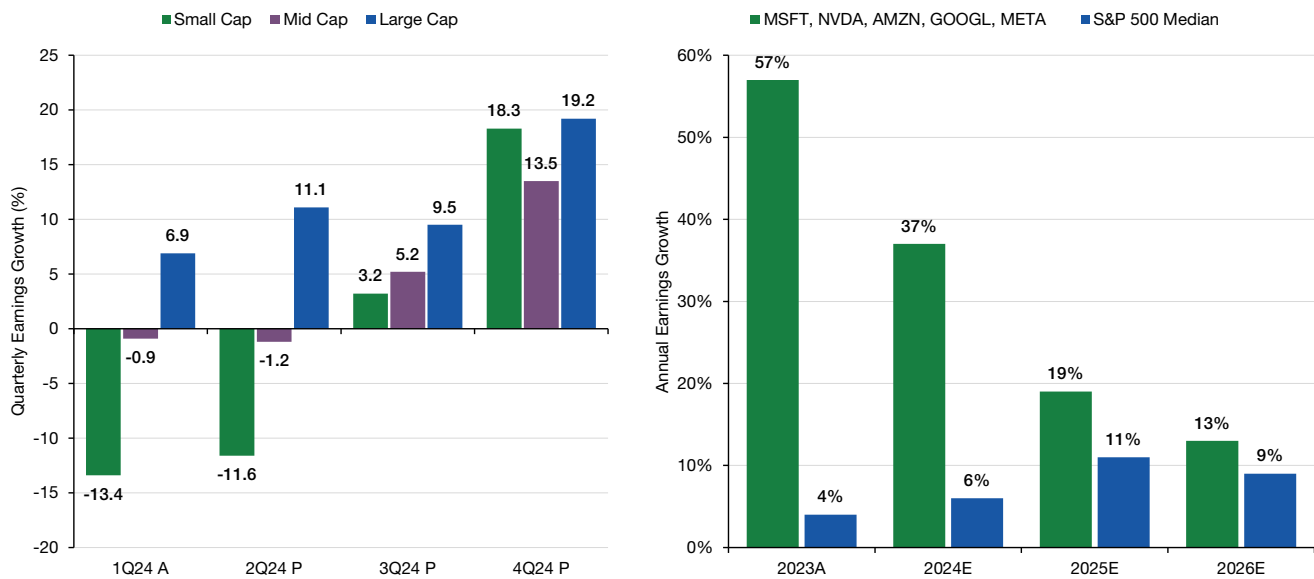


Following the softer CPI print, we saw a dramatic rally in small capitalization (cap) stocks. On the day of the release (Thursday, July 11, 2024), the Russell 2000® Index was up over 2.5%, while the NASDAQ (National Association of Securities Dealers Automated Quotations) was down nearly 2%. The magnitude of this price action and subsequent follow-through support our view that clarity around the direction of inflation should encourage investors to step out on the risk curve beyond the “Magnificent 7” and embrace other large, mid, and small cap stocks.

At the same time, the differential in earnings growth between large companies and small companies should close in the second half of 2024 and into 2025 (see Figure 2).

Figure 2. Strong Earnings Growth Increases Potential Opportunities in Equities

Actual and projected quarterly earnings growth rates of small, mid, and large cap companies, as of May 24, 2024 (left), and actual and estimated annual earnings growth rates of the companies shown and the S&P 500® Index as of June 17, 2024



Source: FactSet, Standard & Poor’s, and Jefferies (left) and Goldman Sachs Global Investment Research (right). Data as of May 24, 2024 (left panel) and June 17, 2024 (date of report, right panel). MSFT=Microsoft. NVDA=NVidia. AMZN=Amazon. GOOGL=Alphabet. META=Meta. Earnings growth as measured by growth in net income. **Past performance is not a reliable indicator or guarantee of future results.** The historical data shown in the chart above are for illustrative purposes only and do not represent any specific portfolio managed by Lord Abbett.

After a torrid stretch of outperformance in 2023 and into the start of 2024 by large caps, earnings growth for small and mid cap stocks is set to improve to the mid-teens, matching the earnings growth of large cap stocks (Figure 2, left). Furthermore, the earnings growth of MSFT, NVDA, AMZN, GOOGL, and META is set to decelerate as the earnings growth of the rest of the S&P 500 is expected to accelerate (Figure 2, right).

The gap in performance between the S&P 500 Index and the Russell 2000 Index, since the Fed signaled the end of its hiking campaign at the end of October 2023, has narrowed dramatically since the CPI print and the onset of earnings season. From the end of October 2023 through July 18, 2024, small caps have led large caps, with the Russell 2000 up 51.7% and the S&P 500 Index up 49.4%. While this recent outperformance has led investors to speculate on the sustainability of the rally, we expect returns from all stocks (not just the Mag 7!) to improve as earnings growth accelerates, and investors gain confidence in the price they are paying for earnings as clarity on inflation and rates continues to improve.

We believe Lord Abbett equity portfolios are well positioned to potentially take advantage of this environment. A unifying principle for our portfolios is that we seek to invest in quality companies with durable competitive advantages led by excellent management teams. We do this in growth and value stocks and in U.S. and non-U.S. companies. Low economic growth favors those companies that grow with predictable revenue and resilient earnings, regardless of the economic cycle. Higher cost of capital raises barriers to entry and favors high-quality businesses with competitive advantages and leaders that can intelligently allocate capital in efforts to maximize returns. And finally, the rapid pace of innovation favors businesses led by exceptional management teams with a willingness, even a paranoia, to embrace change and to adapt, or die.



Important Information

Unless otherwise noted, all discussions are based on U.S. markets, U.S. monetary and fiscal policies, and U.S. dollar-denominated index and return data.

Asset allocation or diversification does not guarantee a profit or protect against loss in declining markets.

No investing strategy can overcome all market volatility or guarantee future results.

The value of investments and any income from them is not guaranteed and may fall as well as rise, and an investor may not get back the amount originally invested. Investment decisions should always be made based on an investor's specific financial needs, objectives, goals, time horizon, and risk tolerance.

Market forecasts and projections are based on current market conditions and are subject to change without notice. Projections should not be considered a guarantee.

Specific investments described herein do not represent all investment decisions made by Lord Abbett. The reader should not assume that investment decisions identified and discussed were or will be profitable. Specific investment advice references provided herein are for illustrative purposes only and are not necessarily representative of investments that will be made in the future.

Mentions of specific companies are for reference purposes only and are not meant to describe the investment merits of, or potential or actual portfolio changes related to, securities of those companies.

Equity Investing Risks

The value of investments in equity securities will fluctuate in response to general economic conditions and to changes in the prospects of companies and/or sectors in the economy. While growth stocks are subject to the daily ups and downs of the stock market, their long-term potential as well as their volatility can be substantial. Value investing involves the risk that the market may not recognize that securities are undervalued, and they may not appreciate as anticipated. Smaller companies tend to be more volatile and less liquid than larger companies. Small cap companies may also have more limited product lines, markets, or financial resources and typically experience a higher risk of failure than large cap companies.

Fixed-Income Investing Risks

The value of investments in fixed-income securities will change as interest rates fluctuate and in response to market movements. Generally, when interest rates rise, the prices of debt securities fall, and when interest rates fall, prices generally rise. High yield securities, sometimes called junk bonds, carry increased risks of price volatility, illiquidity, and the possibility of default in the timely payment of interest and principal. Bonds may also be subject to other types of risk, such as call, credit, liquidity, and general market risks. Longer-term debt securities are usually more sensitive to interest-rate changes; the longer the maturity of a security, the greater the effect a change in interest rates is likely to have on its price.

The credit quality of fixed-income securities in a portfolio is assigned by a nationally recognized statistical rating organization (NRSRO), such as Standard & Poor's, Moody's, or Fitch, as an indication of an issuer's creditworthiness. Ratings range from 'AAA' (highest) to 'D' (lowest). Bonds rated 'BBB' or above are considered investment grade. Credit ratings 'BB' and below are lower-rated securities (junk bonds). High-yielding, non-investment-grade bonds (junk bonds) involve higher risks than investment-grade bonds. Adverse conditions may affect the issuer's ability to pay interest and principal on these securities.

This material may contain assumptions that are "forward-looking statements," which are based on certain assumptions of future events. Actual events are difficult to predict and may differ from those assumed. There can be no assurance that forward-looking statements will materialize or that actual returns or results will not be materially different from those described here.

The views and opinions expressed are as of the date of publication, and do not necessarily represent the views of the firm as a whole. Any such views are subject to change at any time based upon market or other conditions and Lord Abbett disclaims any responsibility to update such views. Lord Abbett cannot be responsible for any direct or incidental loss incurred by applying any of the information offered.

This material is provided for general and educational purposes only. It is not intended as an offer or solicitation for the purchase or sale of any financial instrument, or any Lord Abbett product or strategy. References to specific asset classes and financial markets are for illustrative purposes only and are not intended to be, and should not be interpreted as, recommendations or investment advice.

Certain information contained herein has been obtained from third party sources and such information has not been independently verified by Lord Abbett. No representation, warranty, or undertaking, expressed or implied, is given to the accuracy or completeness of such information by Lord Abbett or any other person. While such sources are believed to be reliable, Lord Abbett does not assume any responsibility for the accuracy or completeness of such information. Lord Abbett does not undertake any obligation to update the information contained herein as of any future date.

Please consult your investment professional for additional information concerning your specific situation.

Glossary & Index Definitions

Consensus estimate is an aggregate forecast of a public company's expected earnings based on the combined estimates of all analysts that cover the stock.

The **U.S. Federal Reserve (Fed)** is the central bank of the United States. The federal funds (fed funds) rate is the target interest rate set by the Fed at which commercial banks borrow and lend their excess reserves to each other overnight.

Growth stocks may be characterized as equities of companies that have demonstrated better-than-average gains in earnings in recent years and that are expected to continue delivering high levels of profit growth. Growth equities typically carry higher price-to-earnings multiples than the broader market, high earnings growth records, and greater volatility than broader market. Secular growth stocks are stocks of companies whose economic performance is relatively immune to economic cycles.

Value stocks may be characterized as equities of companies that have fallen out of favor with investors but still have good fundamentals, or new companies that have yet to be recognized by investors. Value stocks typically feature lower price-to-earnings multiples than the broader market, and often industry peers, and somewhat lower volatility than the overall equity market.

The **Russell 2000® Index** measures the performance of the 2,000 smallest companies in the Russell 3000 Index, which represents approximately 10% of the total market capitalization of the Russell 3000 Index.

The **S&P 500® Index** is widely regarded as the standard for measuring large cap U.S. stock market performance and includes a representative sample of leading companies in leading industries.

Market capitalization: The U.S. Financial Industry Regulatory Authority, or FINRA, defines the following categories of stocks based on their market value: mega cap stocks, \$200 billion or more; large cap stocks, between \$10 billion and \$200 billion; mid cap stocks, between \$2 billion and \$10 billion; small cap stocks, between \$250 million and \$2 billion; and micro cap stocks, less than \$250 million.

The **"Magnificent Seven" (Mag 7)** are mega cap stocks that include Apple, Amazon, Alphabet, Meta Platforms, Microsoft, NVIDIA, and Tesla.

Net income is a company's income minus cost of goods sold, expenses, depreciation and amortization, interest, and taxes for an accounting period. It is also called the bottom line on a company's income statement.



The Nasdaq is an American stock exchange based in New York City. It is the most active stock trading venue in the U.S. by volume, and ranked second on the list of stock exchanges by market capitalization of shares traded in the U.S.

Mentions of specific companies are for reference purposes only and are not meant to describe the investment merits of, or potential or actual portfolio changes related to, securities of those companies.

Bloomberg Index Information

Source: Bloomberg Index Services Limited. BLOOMBERG® is a trademark and service mark of Bloomberg Finance L.P. and its affiliates (collectively "Bloomberg"). Bloomberg owns all proprietary rights in the Bloomberg Indices. Bloomberg does not approve or endorse this material or guarantee the accuracy or completeness of any information herein, or make any warranty, express or implied, as to the results to be obtained therefrom and, to the maximum extent allowed by law, shall not have any liability or responsibility for injury or damages arising in connection therewith.

Indexes are unmanaged, do not reflect the deduction of fees or expenses, and are not available for direct investment.

This material is the copyright © 2024 of Lord, Abbett & Co. LLC. All Rights Reserved.

Important Information for U.S. Investors

Lord Abbett mutual funds are distributed by Lord Abbett Distributor LLC.

FOR MORE INFORMATION ON ANY LORD ABBETT FUNDS, CONTACT YOUR INVESTMENT PROFESSIONAL OR LORD ABBETT DISTRIBUTOR LLC AT 888-522-2388, OR VISIT US AT LORDABBETT.COM FOR A PROSPECTUS, WHICH CONTAINS IMPORTANT INFORMATION ABOUT A FUND'S INVESTMENT GOALS, SALES CHARGES, EXPENSES AND RISKS THAT AN INVESTOR SHOULD CONSIDER AND READ CAREFULLY BEFORE INVESTING.

The information provided is not directed at any investor or category of investors and is provided solely as general information about Lord Abbett's products and services and to otherwise provide general investment education. None of the information provided should be regarded as a suggestion to engage in or refrain from any investment-related course of action as neither Lord Abbett nor its affiliates are undertaking to provide impartial investment advice, act as an impartial adviser, or give advice in a fiduciary capacity. If you are an individual retirement investor, contact your financial advisor or other fiduciary about whether any given investment idea, strategy, product, or service may be appropriate for your circumstances.

Important Information for non-U.S. Investors

Note to Switzerland Investors: In Switzerland, the Representative is ACOLIN Fund Services AG, Leutschenbachstrasse 50, CH-8050 Zurich, whilst the Paying Agent is Bank Vontobel Ltd., Gotthardstrasse 43, CH-8022 Zurich. The prospectus, the key information documents or the key investor information documents, the instrument of incorporation, as well as the annual and semi-annual reports may be obtained free of charge from the representative. In respect of the units offered in Switzerland, the place of performance is at the registered office of the representative. The place of jurisdiction shall be at the registered office of the representative or at the registered office or domicile of the investor.

Note to European Investors: This communication is issued in the United Kingdom and distributed throughout the European Union by Lord Abbett (Ireland) Limited, UK Branch and throughout the United Kingdom by Lord Abbett (UK) Ltd. Both Lord Abbett (Ireland) Limited, UK Branch and Lord Abbett (UK) Ltd are authorized and regulated by the Financial Conduct Authority.

A decision may be taken at any time to terminate the arrangements made for the marketing of the Fund in any EEA Member State in which it is currently marketed. In such circumstances, Shareholders in the affected

EEA Member State will be notified of this decision and will be provided with the opportunity to redeem their shareholding in the Fund free of any charges or deductions for at least 30 working days from the date of such notification.

Lord Abbett (Middle East) Limited is authorised and regulated by the Dubai Financial Services Authority ("DFSA"). The entire content of this document is subject to copyright with all rights reserved. This research and the information contained herein may not be reproduced, distributed or transmitted in any jurisdiction or to any other person or incorporated in any way into another document or other material without our prior written consent. This document is directed at Professional Clients and not Retail Clients. Any other persons in receipt of this document must not rely upon or otherwise act upon it. This document is provided for informational purposes only. Nothing in this document should be construed as a solicitation or offer, or recommendation, to acquire or dispose of any investment or to engage in any other transaction. Nothing contained in this document constitutes an investment, an offer to invest, legal, tax or other advice or guidance and should be disregarded when considering or making investment decisions.

Note to Singapore Investors: Lord Abbett Global Funds I plc (the "Company") and the offer of shares of each sub-fund of the Company do not relate to a collective investment scheme which is authorized under Section 286 of the Securities and Futures Act, Ch. 289 of Singapore ("SFA") or recognized under Section 287 of the SFA, and shares in each sub-fund of the Company are not allowed to be offered to the retail public. Pursuant to Section 305 of the SFA, read in conjunction with Regulation 32 of and the Sixth Schedule to the Securities and Futures (Offers of Investments) (Collective Investment Schemes) Regulations 2005 (the "Regulations"), the Lord Abbett Global Multi-Sector Bond Fund, the Lord Abbett High Yield Fund, the Lord Abbett Short Duration Income Fund, the Lord Abbett Ultra Short Bond Fund, the Lord Abbett Climate Focused Bond Fund, the Lord Abbett Emerging Markets Corporate Debt Fund and the Lord Abbett Multi Sector Income Fund have been entered into the list of restricted schemes maintained by the Monetary Authority of Singapore for the purposes of the offer of shares in such sub-funds made or intended to be made to relevant persons (as defined in section 305(5) of the SFA), or, the offer of shares in such sub-funds made or intended to be made in accordance with the conditions of section 305(2) of the SFA. These materials do not constitute an offer or solicitation by anyone in Singapore or any jurisdiction in which such an offer or solicitation is not authorized or to any person to whom it is unlawful to make such an offer or solicitation.

Note to Hong Kong Investors: The contents of this material have not been reviewed nor endorsed by any regulatory authority in Hong Kong. An investment in the Fund may not be suitable for everyone. If you are in any doubt about the contents of this material, you should consult your stockbroker, bank manager, solicitor, accountant or other financial adviser for independent professional advice. The Fund is not authorised by the Securities and Futures Commission ("SFC") in Hong Kong pursuant to Section 104 of the Securities and Futures Ordinance (Cap 571, Laws of Hong Kong) ("SFO"). This material has not been approved by the SFC in Hong Kong, nor has a copy of it been registered with the Registrar of Companies in Hong Kong and, must not, therefore, be issued, or possessed for the purpose of issue, to persons in Hong Kong other than (1) professional investors within the meaning of the SFO (including professional investors as defined by the Securities and Futures (Professional Investors) Rules); or (2) in circumstances which do not constitute an offer to the public for the purposes of the Companies (Winding Up and Miscellaneous Provisions) Ordinance (Cap 32, Laws of Hong Kong) or the SFO. This material is distributed on a confidential basis and may not be reproduced in any form or transmitted to any person other than the person to whom it is addressed.